

Nokia 7360 ISAM FX

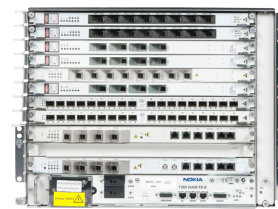
Optical LAN (ETSI)

The Nokia 7360 Intelligent Services Access Manager (ISAM) FX is a high capacity access node designed to meet the evolving needs of enterprise Optical LAN. It allows enterprises and other organizations to enjoy a premium experience with all their services today and to smoothly evolve to the even higher capacity needs of tomorrow in a cost-effective way. The Nokia 7360 ISAM FX simultaneously supports Gigabit Passive Optical Network (GPON) and next-generation PON technologies. It enables delivery of all services, including voice, data, video, Wi-Fi backhaul, security, surveillance and building automation through its market-leading capacity and non-blocking connectivity to each user port.

The Nokia 7360 ISAM FX is available in two size variants (small - FX-4, and medium - FX-8) that are suitable for business offices, large enterprises, hospitals, universities, hospitality sector, sports arenas and others. It is a centralized access point for the entire LAN, capable of serving from hundreds to thousands of users and devices. The 7360 FX supports GPON and universal next-generation PON (universal NG-PON) technology for cost-efficient introduction of 10 Gb/s symmetric and asymmetric services with XGS-PON. It has sufficient switching, backplane and uplink capacity to evolve to time wavelength division multiplexing (TWDM) technology in the future. The Nokia approach allows organizations to evolve their LAN in a gradual and cost-effective way, using the same access node and in-building cabling, while making minimal changes in electronics.

The market-leading capacity of 7360 ISAM FX enables organizations to:

- Meet the service demands with premium user experience
- Lower operational costs through savings in power, floor space and simpler management
- Get long-term value



7360 ISAM FX-8



7360 ISAM FX-4

Features

- Simultaneous support of multiple fiber access technologies
- Different shelf sizes, containing 4 or 8 line cards
- GPON and XGS-PON support
- All applications (voice, data, video, wireless backhaul, surveillance) converged on a single platform
- IP/Ethernet access platform
- Advanced traffic management
- Smooth evolution path to TWDM-PON using the same platform
- Managed by the Nokia 5571 Passive Optical LAN Command Center (PCC)

Benefits

- High capacity to meet increasing LAN demand
- No single point of congestion
- Dynamic bandwidth allocation (DBA) to allow peak bursts up to 1Gb/s per user/device
- Shelf-size options that support any building/campus size or deployment model in a central indoor or outdoor location
- Commonality of software, line cards and deployment practices across all ISAM FX shelf variants
- Green technology (power efficient)
- All services operate on a single network

Technical specifications

Full service platform

- Multiservice access support
 - 8-port universal NG-PON line card
 - 16-port GPON line card
 - 8-port GPON line card

- Network termination (NT) support: FANT-F
 - 480Gb/s switching matrix (bidirectional)
 - Active-Active redundancy
 - 160Gb/s uplink capacity
 - Small form-factor pluggable (SFP+) cages
- Network termination (NT) support: FANT-G
 - 1.28 Tb/s switching matrix (bidirectional)
 - Active/Active redundancy in the data plane and Active/Standby in the control and management plane
 - 360 Gb/s uplink capacity
 - C-Form Factor Pluggable (CFP4)

Eco-sustainability

- Product lifetime maximized by modular, shelf-based concept and by implementing new features and functionalities through remote software download
- Power consumption targets code of conduct (CoC) power consumption limits
- Compliant with the European directive 2002/95/EC on the restriction of the use of certain hazardous substances (RoHS)
- Product collection and treatment under Nokia responsibility complies with the national laws on product treatment applied at the end of life for Wastes from Electrical and Electronic Equipment (WEEE), implementing the European Directive (2002/96/EC)
- Product packaging materials are free from hydrochlorofluorocarbons (HCFCs)
- Plastic product packaging material is marked according to ISO 11469, referring to ISO 1043 (97/129/EEC)



Standards compliance

Environmental

- ETS EN 300 019-1-1 storage – Class 1.1 weather-protected, partly temperature-controlled locations
- ETS EN 300 019-1-2 transport – Class 2.3 public transportation
- ETS EN 300 019-1-3 stationary use – Class 3.1E and Class 3.3 (assuming no condensation and icing)
- GR-63-CORE
- TP76200MP
- GR-3108-CORE

Powering

- ETS EN 300 132-2

Protection

- ITU-T K.20 enhanced and K.45 basic

Safety

- IEC 60950, EN 60950 Class 1, AS/NZS 60950.1
- UL/CSA 60950-1-03
- EN 60950-1

EMC

- ETS EN 300 386 for telecommunications center installation environment
- ETS ES 201 468
- GR-1089-CORE
- FCC Part 15 Class A
- EN 55022
- Acoustic noise
 - ETS 300 753

About Nokia

We create the technology to connect the world. Powered by the research and innovation of Nokia Bell Labs, we serve communications service providers, governments, large enterprises and consumers, with the industry's most complete, end-to-end portfolio of products, services and licensing.

From the enabling infrastructure for 5G and the Internet of Things, to emerging applications in digital health, we are shaping the future of technology to transform the human experience. networks.nokia.com

Nokia is a registered trademark of Nokia Corporation. Other product and company names mentioned herein may be trademarks or trade names of their respective owners.

© 2018 Nokia

Nokia Oyj
Karaportti 3
FI-02610 Espoo, Finland
Tel. +358 (0) 10 44 88 000

Document code: SR1801021491EN (February)

Operating environment

- Temperature: -40°C to 65°C (-40°F to 149°F)
- Relative humidity: 5% to 93% (non-condensing)
- Over-temperature sensors and shutdown

Power

- Input
 - 48/60V DC nominal
 - Fully redundant power feeding (Branch A and B)

Physical dimensions

FX-8

- Height: 360mm (14.1in) (8RU)
- Width: 445mm (17.5in)
- Depth: 280mm (11.0in)

FX-4

- Height: 223mm (8.8in) (5RU)
- Width: 445mm (17.5in)
- Depth: 280mm (11.0in)
- Rack-mounting pitch of 25mm (0.98in)